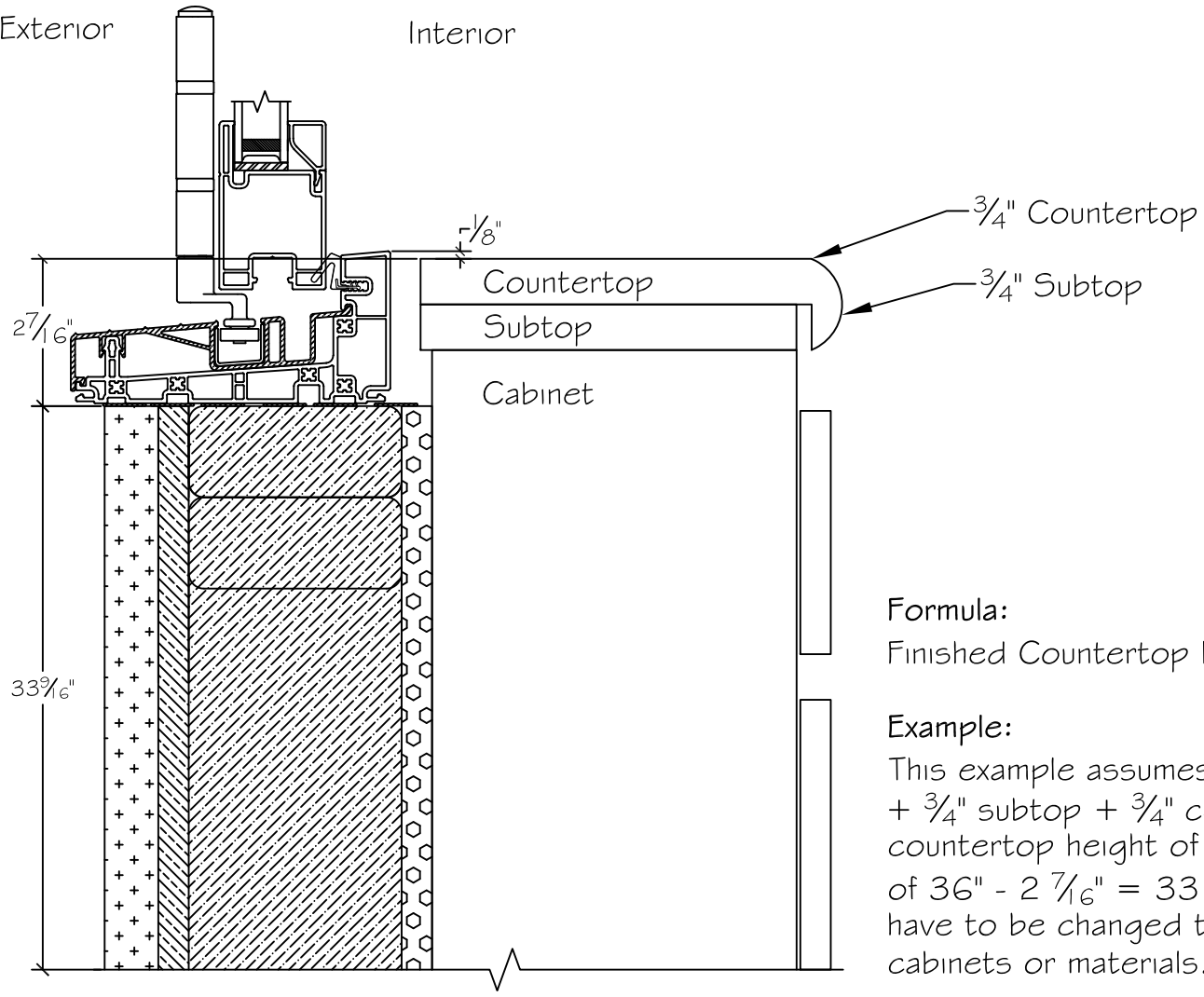


Exterior

Interior



Formula:

Finished Countertop Height - $2 \frac{7}{16}$ " = Sill Height

Example:

This example assumes a standard $34 \frac{1}{2}$ " cabinet height + $\frac{3}{4}$ " subtop + $\frac{3}{4}$ " countertop, giving a finished countertop height of 36". The finished countertop height of $36" - 2 \frac{7}{16}" = 33 \frac{9}{16}"$ sill height. The sill height will have to be changed to compensate for different size cabinets or materials.

450 Delta Ave
Brea, Ca 92821
(714) 385-1202



Notice: This document contains information proprietary to and is protected by copyright of Win-Dor Inc. and shall not be copied, disclosed to others, or used for any purpose other than that for which it is given, without the written permission of Win-Dor Inc.

Project:

File name: 2750 Folding Window with Cabinet | .375 inch Nail-fin

Date: 20180817

Notes:

Layout: 2750 Bifold Window Sill Height

Drawn by: J Johnson