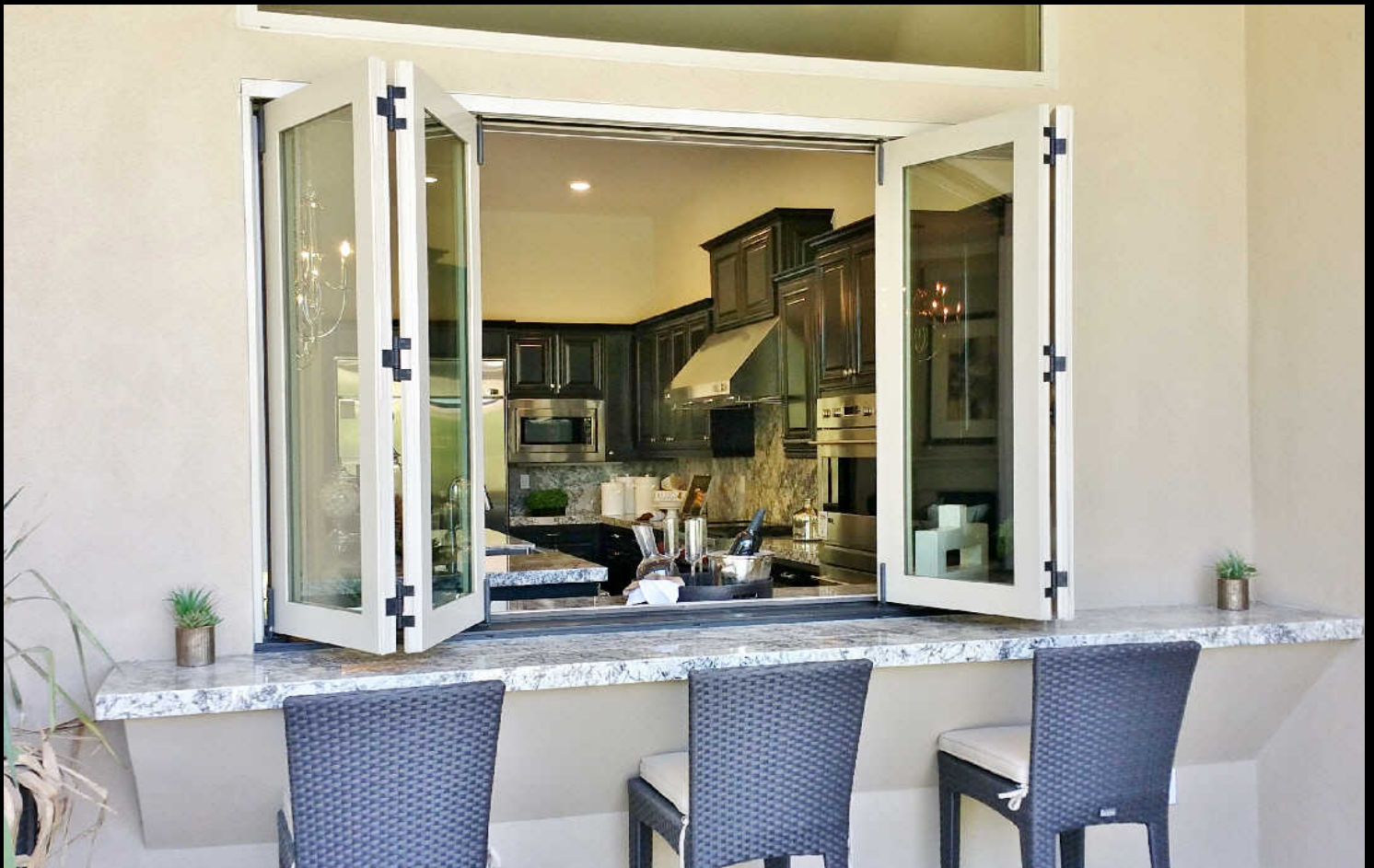


WINDOR[®] SYSTEMS

For the Name and the Products You Should Trust!



2750 Bi-Folding Window System



■ Features and Benefits

- Vinyl Frame with aluminum reinforcement
- Foam backed seal on main frame
- Contemporary style vinyl sash
- Welded sash corners
- Dual interlocking weather seal on sash for superior air and thermal performance
- Centor™ E3 hardware system in stainless and dark powder coat finishes
- Stainless multipoint locking hardware
- Internal Multipoint shoot bolt system

■ Glass Options

- Cardinal™ 366® LoE Dual Glaze tempered with warm edge spacer system
- Clear, obscure, and custom glass is available

■ Hardware

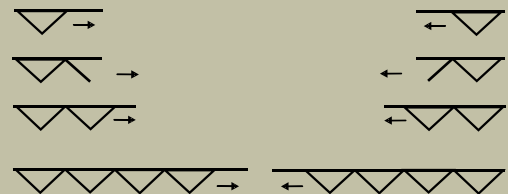
- Hardware Colors; White, Black powder coat, and Brushed Chrome

■ Grids

- SDL (Simulated Divided Lite)
- Flat (Colonial)
- Sculptured (Continental)

■ Sizes

- New Construction / Replacement
- Custom applications



Drawings show out-swing operation



Win-Dor is a proud member of the following



The National
Fenestration
Rating
Council



American
Architectural
Manufacturer
Association

www.windorsystems.com