

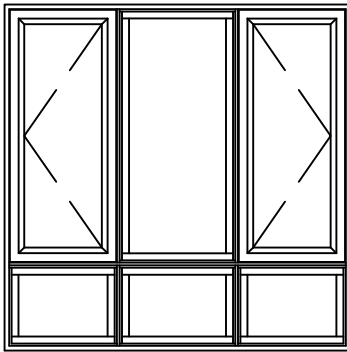


6 lite Configurations

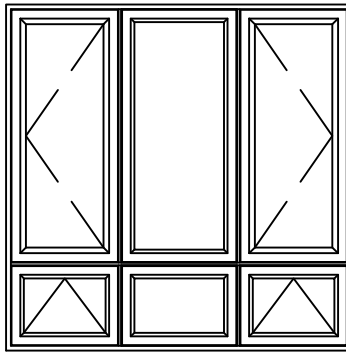
1750 Series Casement Window

Win-Dor's 1750 series comes standard with welded uPVC frame and has a depth of 3 1/2". Nail-fin comes in a standard vinyl 1" and 1 3/8" setback.

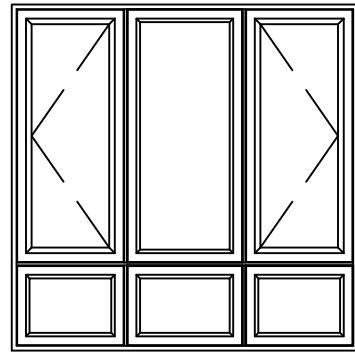
1750 LHC-PW-RHC / PW-PW-PW



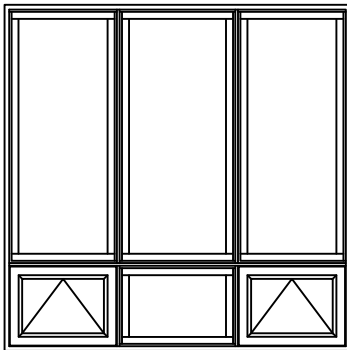
1750 LHC-FC-RHC / AWN-FC-AWN



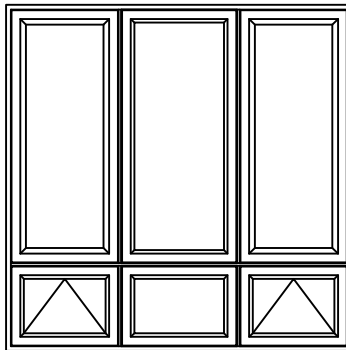
1750 LHC-FC-RHC / FC-FC-FC



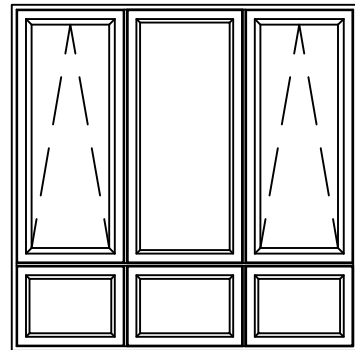
1750 PW-PW-PW / AWN-PW-AWN



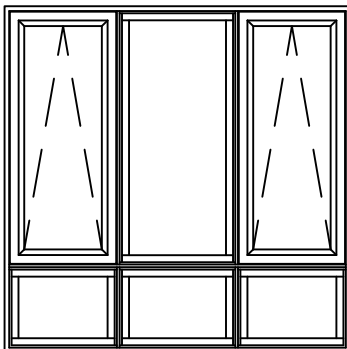
1750 FC-FC-FC / AWN-FC-AWN



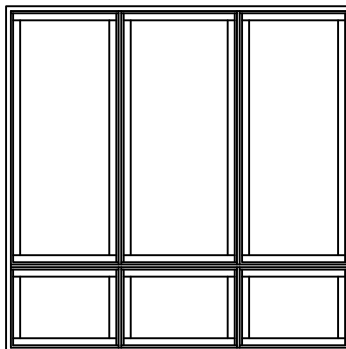
1750 FC-FC-FC / FC-FC-FC



1750 LHC-PW-RHC / PW-PW-PW



1750 PW-PW-PW / PW-PW-PW



1750 FC-FC-FC / FC-FC-FC

